



Harlem Yacht Club
2020 Big Tom City Island Cup
June 13, 2020

Sailing Instructions

1. EVENT

- 1.1 City Island Cup sailed on the waters of Eastchester Bay
- 1.2 The organizing authority is the Harlem Yacht Club

2 RULES

- 2.1 The regatta will be governed by the Racing Rules of Sailing 2017-2020 (RRS), the regulations of the Yacht Racing Association of Long Island Sound (YRALIS), the Notice of Race (NOR) and these Sailing Instructions.
- 2.2 US Sailing Prescription Appendix V "ALTERNATIVE PENALTIES", Rule V1 shall apply. Copy attached
- 2.3 Boats shall keep clear of commercial shipping as required by the IRPCAS or other government right-of-way rules. The penalty for breaking this rule may be disqualification.
- 2.4 In the event of a conflict, these Sailing Instructions shall prevail.

3 NOTICES TO COMPETITORS

- 3.1 Changes shall be posted online at yachtscoring.com the evening before the first race.
- 3.2 Race Committee will communicate with the fleet via VHF Channel 71

4 COMMUNICATION

- 4.1 The Race Committee will make general announcements via VHF Ch 71 at 11am on race day.
- 4.2 Courses, Starting Warnings and Recalls will be announced on VHF 71.

5 SCHEDULE OF RACES

- 5.1 There are a maximum of two races scheduled.
- 5.2 One race shall constitute a series.
- 5.3 The first Warning Signal for shall be made no earlier than 1200 hours
- 5.4 Prior to the first start, each boat shall check in by passing the Race Committee and announcing their sail number.
- 5.5 If a second race is to be sailed it will be announced on VHF 71.

6 RACING AREA

- 6.1 The Racing Area shall be the waters in and around Eastchester Bay, as shown on the attached Course Chart.

7 MARKS AND COURSES

- 7.1 The marks of the racing area shall be as shown on the attached Course Chart.
- 7.2 Courses shall be announced on VHF71 and shown on the RC boat
- 7.3 Course shall be a series of Marks listed in order of rounding.
- 7.4 All Marks shall be left to port, except the finish mark when finishing downwind.
- 7.4 After the start, boats shall not sail through the start/finish line unless finishing

8 THE START

- 8.1 Races will be started in accordance with Appendix U, Audible Sound Signals. Copy Attached

8.2 The starting line shall be between an orange flag on the Race Committee boat and the Starting mark.

8.3 Classes will be announced on VHF71 and class flag will be hoisted prior to the beginning of that start

8.4 Boats whose Warning signal has not been made shall keep clear of the starting area.

9 THE FINISH

9.1 The finish line shall be between an orange flag on the Race Committee boat and the Finish mark.

9.3 Unless a course is shortened, the finish mark is always the mark used as the starting mark for the race.

10 TIME LIMITS

10.1 The first boat from each start must finish within 3 hours, all succeeding boats must finish within one hour of the first boat's Finish time or be scored Did Not Finish (DNF).

11 PROTESTS

11.1 A competitor intending to file a protest shall hail the Race Committee on VHF channel 71 promptly after finishing the race, announcing the name of the yacht protesting and the name of the yacht being protested.

11.2 Protests shall be emailed the Race Committee within 2 hours of the protesting boat's last finish time for the last race on that day of racing. Protest RC email is [RC/Protest EMAIL](#)

11.3 Protests shall be heard via a Zoom(virtual) protest hearing arranged by the race committee.

12 SCORING

12.1 Scoring shall be as per Appendix A Low Point Scoring, but all races shall be counted.

12.2 PHRF Handicaps will be adjusted using Time-on-Time based on a time correction factor (TCF) derived from a yacht's PHRF certificate rating, using the formula $TCF = 600/(480+PHRF)$.

13 SAFETY

13.1 A boat that retires from a race shall notify the Race Committee as soon as possible.

14 PRIZES

14.1 Prizes for first and second place will be awarded to all classes.

14.2 Prizes for third place will be awarded to classes with five or more entries.

14.3 a. The City Island Cup shall be awarded to the spinnaker class boat with the best overall performance.

b. The Harlem Cup shall be awarded to the non-spinnaker class boat with the best overall performance.

14.4 Awards will be distributed at a location and time to be announced.

15 AFTER-RACE EVENTS

15.1 Due to the Covid 19 Pandemic no after race activities are scheduled.

16 QUESTIONS

16.1 Question regarding these instruction can be directed to the RC

Paul Beaudin paul@doylesails.nyc, 917-584-5194

BIG TOM YACHT RACING

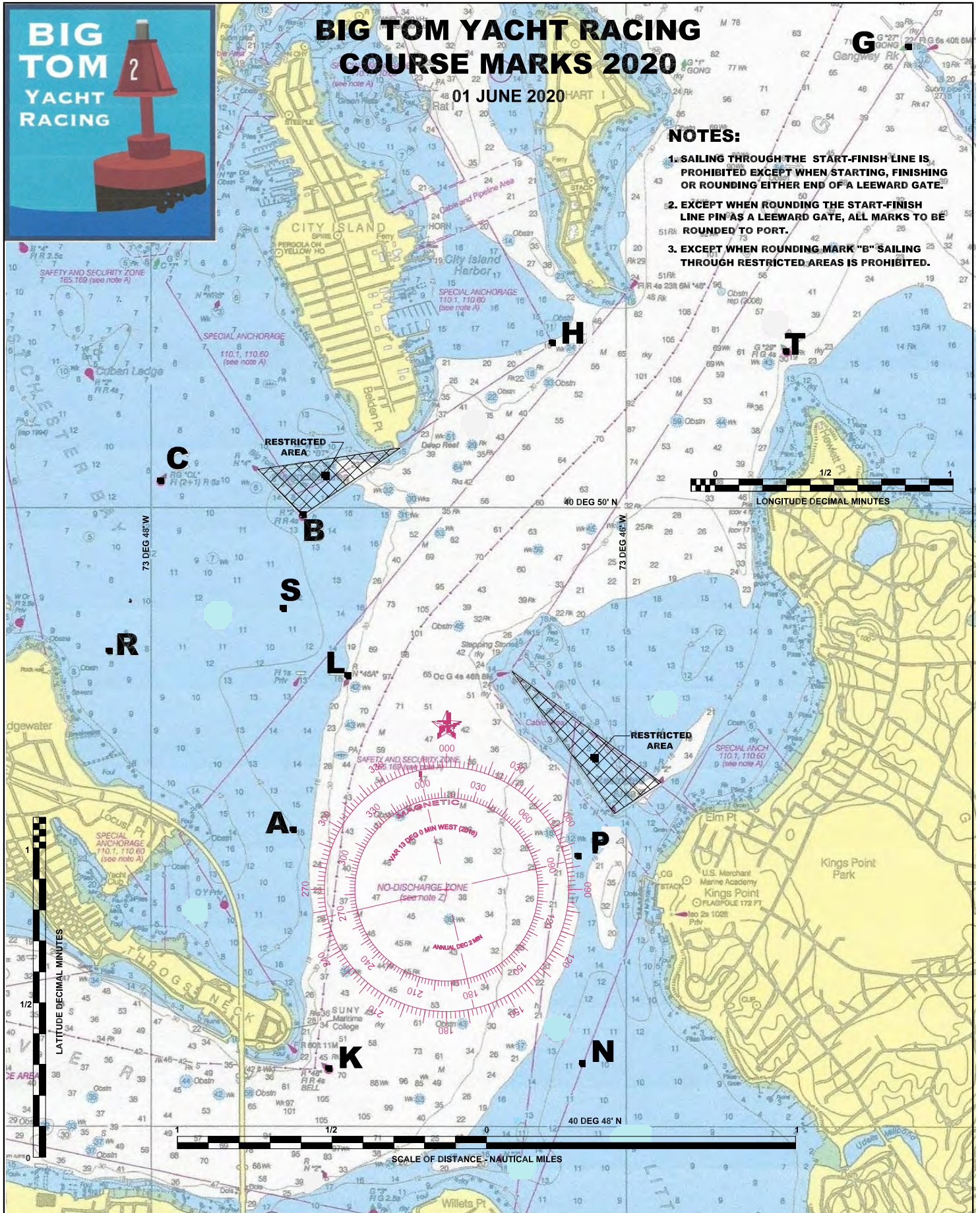


BIG TOM YACHT RACING COURSE MARKS 2020

01 JUNE 2020

NOTES:

1. SAILING THROUGH THE START-FINISH LINE IS PROHIBITED EXCEPT WHEN STARTING, FINISHING OR ROUNDING EITHER END OF A LEEWARD GATE.
2. EXCEPT WHEN ROUNDING THE START-FINISH LINE PIN AS A LEEWARD GATE, ALL MARKS TO BE ROUNDED TO PORT.
3. EXCEPT WHEN ROUNDING MARK "B" SAILING THROUGH RESTRICTED AREAS IS PROHIBITED.



Big Tom Yacht Racing

Mark Locations 2020

1-Jun-20

MARK	Type	Description	Latitude	Longitude
			(North)	(West)
S	BTYR	New Fixed BTYR Start Mark	40°-49' 40.1"	073°-47' 26.3"
A	BTYR	Private BTYR Mark East of Throgs Neck Bridge Causeway (Unlit)	40°-48' 57.0"	073°-47' 24.0"
B	Gov't	Big Tom Red Nun "2" (Fl Red 4 sec)	40°-49' 58.3"	073°-47' 21.6"
C	Gov't	Cuban Ledge Mid Channel Marker Red/Green "CL" (Fl Red 2+1)	40°-50' 05.0"	073°-47' 57.5"
G	Gov't	Gangway Rock Green Gong "27" (Unlit)	40°-51' 29.8"	073°-44' 48.5"
H	BTYR	Private BTYR Mark SSW Off Hart Island (Unlit)	40°-50' 31.9"	073°-46' 18.4"
K	Gov't	Fort Schuyler Red Bell "48" (Fl Red 4 sec)	40°-48' 11.0"	073°-47' 15.0"
L	Gov't	Main Channel Mark South of Big Tom - Red NuN "46A" (Unlit)	40°-49' 26.6"	073°-47' 09.9"
N	BTYR	Private BTYR Mark in Little Neck Bay (Unlit)	40°-48' 11.5"	073°-46' 11.0"
P	BTYR	Private BTYR Mark off Kings Point (Unlit)	40°-48' 52.9"	073°-46' 12.8"
R	BTYR	Private BTYR Mark off Mouth of Weir Creek (Unlit)	40°-49' 32.3"	073°-48' 10.2"
T	Gov't	Hewlett Point Green "29" (Fl Green 4 sec)	40°-50' 30.2"	073°-45' 20.0"

APPENDIX U

AUDIBLE-SIGNAL RACING SYSTEM

This appendix is a US Sailing prescription.

US Sailing prescribes that when the sailing instructions so state the Audible-Signal Racing System described below shall be used. It is recommended primarily for small-boat racing or when race committee resources are limited. Rules in this appendix replace rule 26 and permit changes to Race Signals and the corresponding rules in Part 3.

- U1** Any Race Signal may be made by hailing, in which case the corresponding visual signal may also be used, but not its designated sound signal.
- U2** A series of short sounds may be made at any time to call attention to a hail or a visual signal.
- U3** The starting sequence shall consist of the following sound signals made at the indicated times. These signals shall be timed from their commencement and shall govern, even if visual signals are also used.

<i>Signal</i>	<i>Sound</i>	<i>Time before start</i>
Attention	Series of short sounds	Before the warning
Warning	3 long	3 minutes
Preparatory	2 long	2 minutes
	1 long, 3 short	1 minute, 30 seconds
	1 long	1 minute
	3 short	30 seconds
	2 short	20 seconds
	1 short	10 seconds
	5 short, 1 second apart	5 – 4 – 3 – 2 – 1 seconds
Starting	1 long	0

- U4** Individual recalls shall be signalled by hailing the sail number (or other distinguishing feature) of each recalled boat. Flag X need not be displayed.
- U5** Failure to hear an adequate hail or sound signal shall not be grounds for redress. This changes rule 62.1.

APPENDIX V – ALTERNATIVE PENALTIES

This appendix is a US Sailing prescription.

Rules V1 and V2 provide alternative penalties that encourage competitors to take a penalty when they may have broken one or more rules of Part 2 or rule 31 in an incident. One or both of these rules apply only if the sailing instructions so state.

Please report your experiences with and evaluations of these rules to US Sailing by sending an email to rules@ussailing.org.

V1 PENALTY AT THE TIME OF AN INCIDENT

The first two sentences of rule 44.1 are changed to: ‘A boat may take a One-Turn Penalty when she may have broken one or more rules of Part 2 or rule 31 in an incident while *racing*. However, when she may have broken one or more rules of Part 2 while in the *zone* around a *mark* other than a starting *mark*, her penalty shall be a Two-Turns Penalty.’